



E3
elegant | everlasting | economical

LARGEST INDIAN PVC EDGE BAND MANUFACTURER



EDGE BAND
PROFILE - 2026
Vol-I



INDEX

PARTICULARS	PAGE #
1. ABOUT E3 GROUP	3
2. ABOUT E3 EDGE BAND TAPE	4
3. INFRASTRUCTURE	5
4. STANDARD OFFERINGS	6
5. TECHNICAL DETAILS	7
6. BESPOKE EDGE BAND SERVICES	11
7. EDGE BAND SHADE CARD	12



E3 group began as a little endeavour in the interior products industry in 1990 and quickly became India's top interior and exterior manufacturer with more than 5000 dealers network across PAN India. With ground-breaking qualities, E3 believes in 'Made in India' world-class quality products by 'Delivering promise and exceeding expectations.'

Aesthetically appealing interior design, combining functionality and expression, has become crucial for promoting elegance and perfection, an extension of the unique you. At E3 Group, delighting consumers sparks the imagination, curiosity arouses creativity, and innovations provide opportunities.

No matter your business size, you can trust E3 Group for direct sales, quality, consistency, and professionalism. E3 has something for everyone! Trusted for many years, E3 is known to walk the extra mile by providing bespoke interiors for every decor need.



[E3 GROUP
PROFILE](#)

PVC EDGE BAND



E3 Edgeband is an innovative technology created to create a seamless, coherent appearance in edge banding. High-quality panels require matching edge banding strips in colour, design, and finish to shine truly. In the market since 2013, E3 has been the leading supplier of Edgeband tapes in PAN India offering cutting-edge technology that can meet the qualitative criteria that the market demands.

We manufacture infinite tones, hues, and patterns to match the most diverse laminates and pre-laminated boards. E3 Edgeband is also renowned for having extraordinary qualities, including toughness, adaptability, flexibility, glossy appearance, protection, etc. Our modus operandi is, **'We can provide any colour and size on demand.'**

E3 Edge band firm's core technicians have more than 20 years of expertise, and the company has more than 10 years of solid technical foundation in product manufacturing and application. The technicians with the necessary training test each batch of PVC Edge Band. They retain flawless precision and accuracy by providing customers with the highest quality materials. E3 Edge Band comprises competent professionals and in-house designing experts to suit user preferences.

FEATURES



Easy to Install



Soft Edge



Cost effective



Best Match



UV Layer coating



Made in India



World class quality



Termite Proof



100% recyclable



Nail free



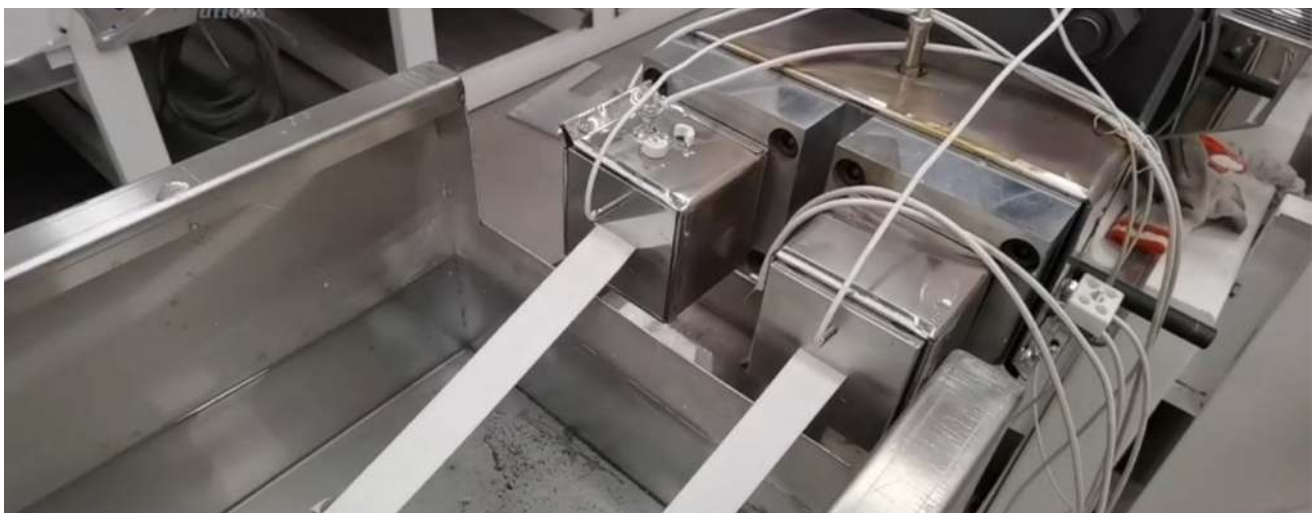


LARGEST MANUFACTURING PLANT IN INDIA
ISO 9001:2015 CERTIFICATED

PVC Edge Band Manufacturing Plant

We are one of the industry's most renowned manufacturers.

- Our manufacturing plant is the largest in India with an area of over 2 lakh sq. ft. situated in Noida, UP.
- At present, its production capacity is 6.5 lac metres per day.
- In stock Edge band tapes are available in more than 300 shades to match all laminates.
- We have dealers, distributors and warehouses in PAN India.
- Any Colors & Any size on demand.



E3 manufactures various types of edge banding as per customer requirements which can be classified as:

MATERIAL :

PVC & ABS

SHADES :

SOLID, WOODEN, METALLIC, FABRIC, MARBLE & STONES

FINISHES:

SUPER MATT, SUPER GLOSS, SPARKLE & SOFT TOUCHE

ROLL LENGTH:

From 25 to 300 metres.

SIZES:

Other than the standard sizes, any size can be made as per requirements

STANDARD SIZES

WIDTH	THICKNESS	WIDTH	THICKNESS
22mm	0.45mm	25mm	2.00mm
22mm	0.80mm	30mm	0.80mm
22mm	1.00mm	30mm	2.00mm
23mm	1.30mm	45mm	0.80mm
22mm	2.00mm	45mm	2.00mm
25mm	0.80mm	55mm	2.00mm



Chemical Product

Product Name: Rigid PVC Edgebanding

Product Usage: A continuous extruded roll available in various thicknesses used to finish the raw edge of HPL, flake boards, plywood and medium density fiberboard. Available in various colors that matches with most of the laminated panels

Composition / Information on Regulated Ingredients

Hazardous Ingredients:

This product contains no Hazardous Ingredients that can be released under normal temperature or working conditions. Rigid PVC Edgebanding contains no vinyl chloride monomers.

Properties

Description	Unit	Value	Standard
Hardness Shore	-	D - 78 ± 4	ISO868
Shrinkage [1h at 140°F (60°C)]	%	< 0.5	Works standard
Static charging	-	Low	-
Vicat softening Temperature (At 50N)	°C	80.3	ASTM D1525-2009

Resistance to Immersion Test (In boiling water for 2 hour)

(a) Change in thickness	%	4.2	1S:2046-1995
(b) Change in mass	%	3.9	1S:2046-1995
(c) Appearance	Degree	5	1S:2046-1995

Colour Fastness to Rubbing

(a) At Dry Staining	Rating	4/5	IS:766-1988
(b) At Wet Staining	Rating	4/5	IS:766-1988

Colour Fastness to Light

(a) Type of lamp	UV A340	No cracks or blister observed	ASTM G154-2016
(b) Exposure Time	24 hour	No cracks or blister observed	ASTM G154-2016

Resistance to Cigarette Burn

Appearance	Rating	4	1S:2046-1995
------------	--------	---	--------------



Resistance to Staining (At R.T. for 24 hour)

Description	Unit	Value	Standard
(a) Acetone	Rating	5	1S:2046-1995
(b) Black Tea	Rating	5	1S:2046-1995

Flammability Test

Condition of test piece (At 23°C and 50% R.H. for 48hour) Two sets of 3 test Specimens

Cease to burn before	mm	25	mark
Cease to burn before the	mm	100	reference mark

Physical Data

State	Solid
Boiling Point	NA
Specific Gravity	1.20 to 1.40
Solubility	Insoluble
Volatility	Negligible

Processing Characteristics

Machining	PVC Suitability
Cutting	Good
Milling Direction	counter direction
Pre-milling	Good
Radius Milling	Good
Profiling	Good
Scraper Processing	Good
Buffing	Good
Bonding	Any conventional hot-melt adhesive suitable for edging tapes can be used
Polish Ability	Good
Stress Whitening	Low
Machining Center Processing Compatibility	Very Good



E3
elegant | everlasting | economical

TECHNICAL DATA SHEET

PVC Edge Banding

PVC Edgebanding Specifications

1. **Color:** Slight color variations are possible from dye lot to dye lot.
2. **Finishes:** Available in Gloss, Matt & SF.
Finish must be smooth and free of defects at a distance of 3 feet from the observer.
Material either has UV inhibitors directly in the resin or has a UV topcoat.
3. **Interior Use:** Only for interior use and not to be exposed to temperatures above 150°F.
4. **Primer:** Backside is 100% covered with a visible primer for proper bond.
5. **Maintenance:** Clean surface with warm soapy water and wipe clean.

Tolerances

Edge Banding Width

Width mm	Tolerance mm
12 – 54	± 0.45

Edge Banding Thickness

Width mm	Tolerance mm
0.4 - 0.7	± 0.05
0.8 - 1.5	± 0.10
1.6 - 2.0	+ 0.20
2.1 - 3.0	+ 0.25

Storage

PVC Edge Banding tape is resistant to rot and may therefore be stored at room temperature (64°F to 68°F) in a room that is weatherproof and protected from direct sun light for a virtually unlimited period.

Warranty

Using accepted industry standards, colors, woodgrains, and patterns have been individually matched and cross-referenced for the best suitable match. Color variation beyond the manufacturers' control may occur in individual resin batches. The manufacturers' warranty and liability for the bond, color match, and surface finish; extend only to the replacement value of the specific edgebanding material. It is the customer's sole responsibility to determine that the bond and color match are acceptable for production before use.



E3
elegant | everlasting | economical

TECHNICAL DATA SHEET

PVC Edge Banding

Fire and Explosion Data

Flash Point: 390 - 700 Degrees Celsius

Flammable Limits

Upper Explosion Limit: N/A

Lower Explosion Limit: N/A

Auto Ignition Temperature: N/A

Suitable Extinguishing Media: Carbon Dioxide Blanket, Water Spray, Dry Powder, Foam

Special Fire Fighting Procedures: Full-face self-contained breathing apparatus (SCBA) used in positive pressure mode should be worn to prevent inhalation of airborne contaminants.

Unusual Fire/Explosion Hazards: May emit Hydrogen Chloride (HCL) or Carbon Monoxide (CO), Oxides of Nitrogen (NOx), other hazardous materials, and smoke are all possible.

Reactive Data

Product Stability: Very Stable

Reactivity conditions: Under normal usage none. However, harsh chemicals such as Ketones, Toluenes, Acetones and other similar solvents may melt or react with the surface finish.

Hazardous Decomposition Implications: Hydrochloric acid can be formed if product is heated to the point of burning and then in the presence of water may form Hydrochloric Acid.

First Aid

Inhalation: Remove the affected user to a well-ventilated area.

Eye Contact: Irritant only on contact, bathe area affected.

Ingestion: Under normal condition, there is no probable route of ingestion.

Skin Contact: Non-Toxic

Disposal and Storage

Waste Disposal: Landfill

Recycle: Product can be reprocessed for re-use.

Environmental Toxicity: Adverse ecological impact is not known or expected under normal use.

CUSTOM-MADE EDGE BAND SAMPLES





EDGE BAND SHADE CARD - 2026

VOL-I



WENGE 1

2001



NATURAL TEAK

2004



WENGE 2

2002



HIGHLAND PINE

2005



WENGE 3

2003



ACACIA DARK

2006

COLOUR CHART

WOODEN SHADES



ACACIA LIGHT

2007



ALBERTA MAPLE

2015



BEVARIAN BEECH

2008



THANSAU MAPLE

2016



INTAL BEECH

2009



SAPELLI

2017



WHITE ASH

2010



NATURAL MAPLE

2018



DOUGLAS PINE

2011



FERRA OAK

2019



CLASSIC WALNUT

2012



GOLDEN OAK

2020



LORRAINE WALNUT

2013



ANTIQUÉ OAK

2021



OXFORD CHERRY

2014



DARK EBONY

2022

COLOUR CHART

WOODEN SHADES



AGRO WOOD

2023



FABRIC-4

2031



WENGE-4

2024



FABRIC-5

2032



HAZEL

2025



FABRIC-6

2033



KHAYA MAHAGONY

2026



FABRIC-7

2034



ROSE MAHAGONY

2027



FABRIC-8

2035



FABRIC-1

2028



COUNTRY DARK

2036



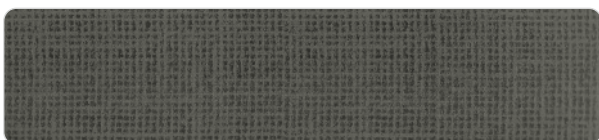
FABRIC-2

2029



COUNTRY LIGHT

2037



FABRIC-3

2030



NEW

NICE WOOD

2038

COLOUR CHART

WOODEN SHADES



WHITE TEAK

2039



ROUGH CUT-2

2047



HIGHLAND PINE-II

2040



ROUGH CUT-3

2048



COMMON TEAK

2041



LIGHT SIAM TEAK

2049



BROWN OAK

2042



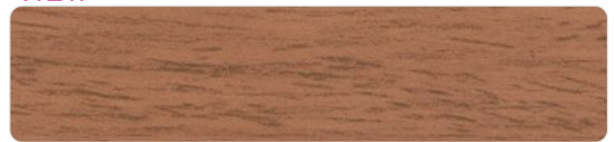
RAW ALUMINIUM

2050



URBAN OAK

2043



EXOTIC TEAK

2051



WEATHERED OAK

2044



ALUMINIUM PEARL

2052



WINE

2045



NEO HIGHLAND PINE

2053



ROUGH CUT-1

2046



CHERRY CAPPUCINO

2054

COLOUR CHART

WOODEN SHADES



GHANA WENGE

2055



WENGE-6

2063



CHESTNUT

2056



SAND CROSS

2064



WENGE-5

2057



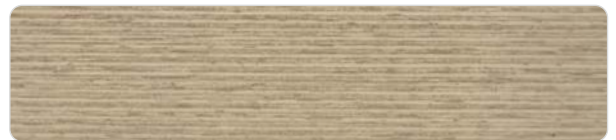
CHOCO CROSS

2065



SAPELLI-2

2058



OCEAN RECON

2066



FABRIC-9

2059



SANDY RECON

2067



FABRIC-10

2060



FIBRE TEAK

2068



ACACIA DARK-II

2061



FIBRE GOLD

2069



ACACIA LIGHT-II

2062

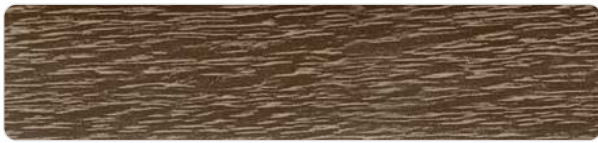


CASTLE OAK

2070

COLOUR CHART

WOODEN SHADES



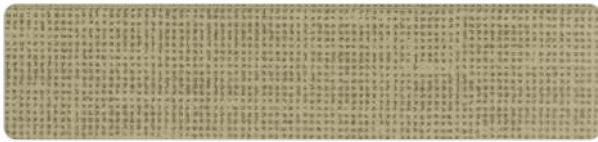
CHOCO OAK

2071



FABRIC-18

2079



FABRIC-11

2072



CLASSIC P. WALNUT

2080



FABRIC-12

2073



TIGRESS TEAK

2081



FABRIC-13

2074



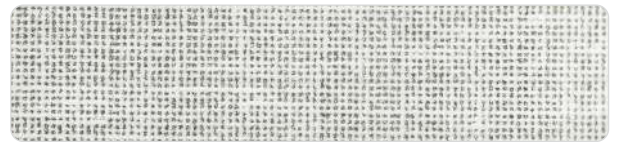
FABRIC-19

2082



FABRIC-14

2075



FABRIC-20

2083



FABRIC-15

2076



FABRIC-21

2084



FABRIC-16

2077



FABRIC-22

2085



FABRIC-17

2078

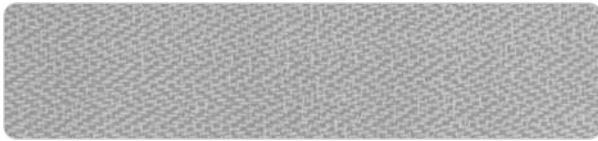


GREY TEAK

2086

COLOUR CHART

WOODEN SHADES



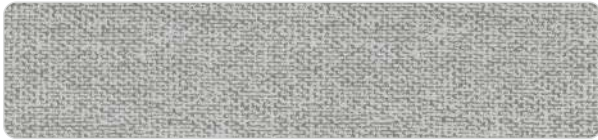
FABRIC-23

2087



FABRIC-24

2088



FABRIC-25

2089



OAK-1

2090



OAK-2

2091



OAK-3

2092



PALASANTO TEAK

2093



SAMARA OAK

2094

NEW



ELEGANT TEAK

2095



FABRIC-26

2096



FABRIC-27

2097



FABRIC-28

2098



FABRIC-29

2099



FABRIC-30

2100

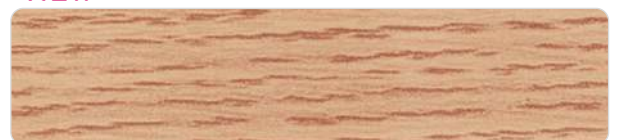
NEW



EUROPEON TEAK

2201

NEW



AMERICAN OAK

2208

COLOUR CHART

WOODEN SHADES

NEW



ROYAL TEAK

2211

NEW



GREY WALNUTI

2212

NEW



SAND CROSS LINE - II

2213

NEW



CHOCO CROSS LINE - II

2214

NEW



LINER

2224

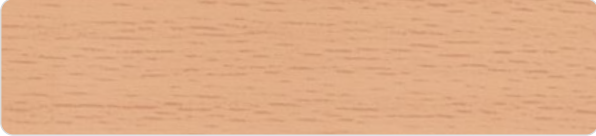
NEW



LINER

2225

NEW



BAVERIAN BEECH - II

2226

NEW



WHITE TEAK - II

2227



LINER

2301



LINER

2302



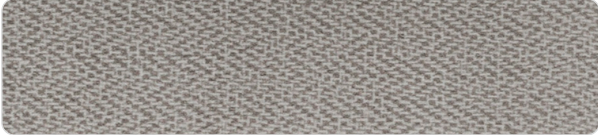
LINER

2303



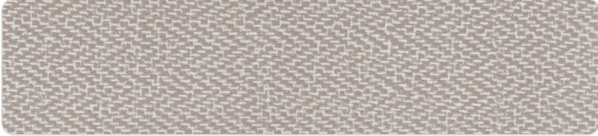
LINER

2308



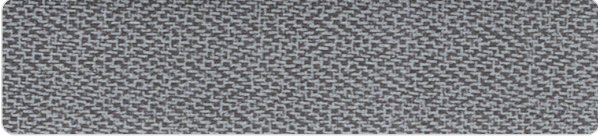
LINER

2309



LINER

2310



LINER

2311



LINER

2312

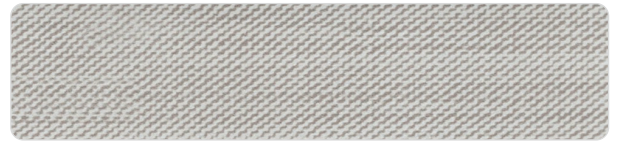
COLOUR CHART

WOODEN SHADES



LINER

2313



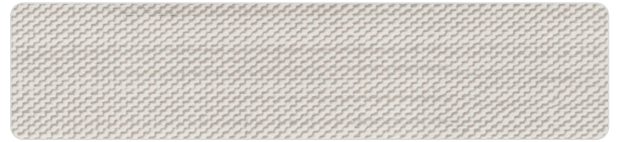
LINER

2339



LINER

2315



LINER

2340



LINER

2316



LINER

2341



LINER

2317 A



WHITE MARBLE

2522



LINER

2320



SAGRADA MARBLE

2523



LINER

2321



GOTHIC MARBLE

2524



LINER

2322



SIERRA MARBLE

2525



LINER

2330

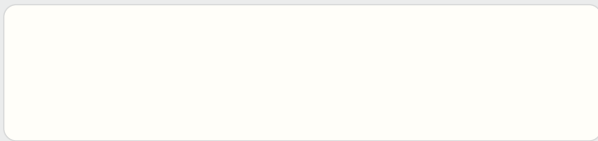


BLACK MARBLE

2526

COLOUR CHART

SOLID SHADES



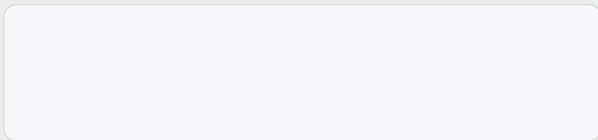
M-WHITE

1000



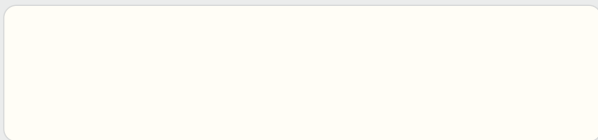
SUPER WHITE

1001



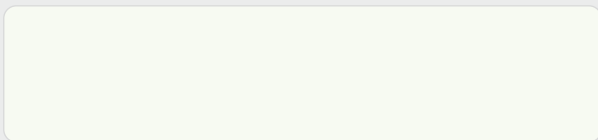
WHITE LILY

1101



FROSTY WHITE

1002



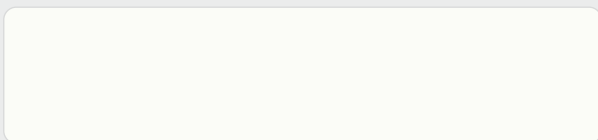
L. WHITE

1102



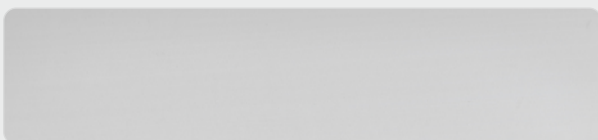
IVORY

1003



SOLAR WHITE

1103



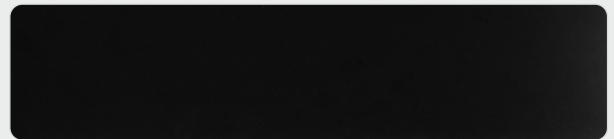
SILVER GREY

1004



SLATE GREY

1005



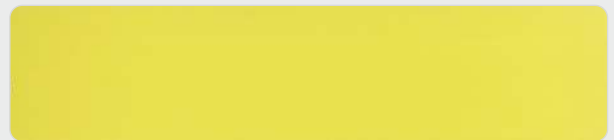
BLACK

1006



ACTION YELLOW

1007



MARIGOLD YELLOW

1008



RED

1009



SHANGRILA

1010



ELECTRIC BLUE

1011



BLACK CURRENT

1012

COLOUR CHART

SOLID SHADES



CAPPUCINO

1013



CHAMPAGNE

1020



NEW CAPPUCINO

1113



TAN

1021



BUBBLE GUM

1014



AUTUMN LEAF

1022



ORANGE

1015



BERRY BRUNCH

1023

NEW



TURQUOISE

1016



FIESTA ROSE

1024



DARK BROWN

1017



RED POPPY

1025



P. GREEN

1018



GRASS GREEN

1026



GOthic GREY

1019



LIME

1027

COLOUR CHART

SOLID SHADES



MINT GREEN

1028



WINTER SEA

1036



KHAKHI

1029



SHORE

1037



AQUA BLUE

1030



ENIGMA

1038



LAVENDER

1031



CARBIE

1039



LILAC

1032



TROOPER

1040



RAW CREAM

1033



MORNING GLOW

1041



PINK POPPY

1034



CHOCOLATE

1042



DARK CITRUS

1035



MAGENTA

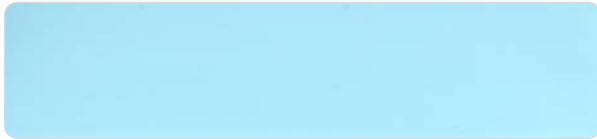
1043

COLOUR CHART

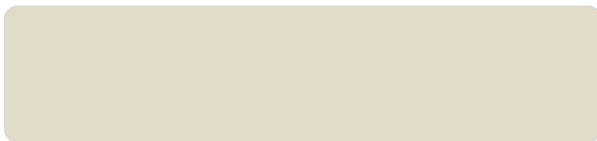
SOLID SHADES



PEARL BLACK 1044



SKY BLUE 1045



IRISH CREAM 1046



ISLAND SKY 1047



PARAKEET 1048



MISTY GREY 1049



DARK GREY 1050



DARK SILVER GREY 1051



WARM GREY 1052



MOCHA BROWN 1053



SILKY CREAM 1054



FEATHER GREY 1055



NEW IRISH CREAM 1056



PRAIRIE GREEN 1057



MIDNIGHT BLUE 1058



FOREST GREEN 1059



PINK SALT 1060



DREAM GREEN 1061

COLOUR CHART

SOLID SHADES



JOLLY GREEN 1062



ADRIATIC BLUE 1063



TONED BLUE 1064

NEW



BEIGE 1065

NEW



MUD ASH 1066

NEW



BRONZE 1067

NEW



MUSHROOM 1068

NEW



PERSIAN BLUE 1069

NEW



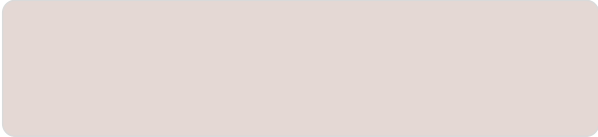
PERSIAN BLUE 1069

NEW



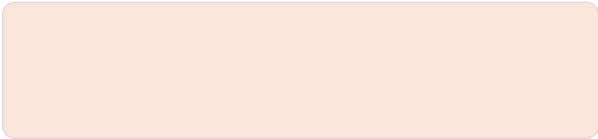
DUSK BROWN 1071 HG

NEW



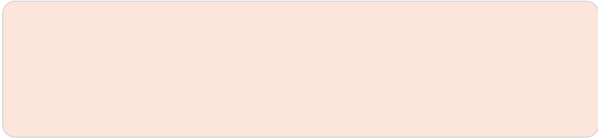
DUSK BROWN 1071

NEW



ROSE CHALK 1072 HG

NEW



ROSE CHALK 1072

NEW



CLAY 1073 HG

NEW



CLAY 1073

NEW



MACCHIATO 1074 HG

NEW



MACCHIATO 1074

NEW



SUNBURN 1075 HG

COLOUR CHART

SOLID SHADES

NEW



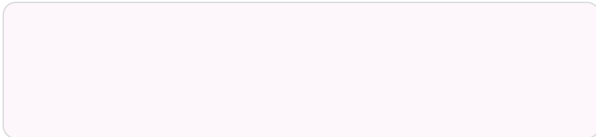
SUNBURN 1075

NEW



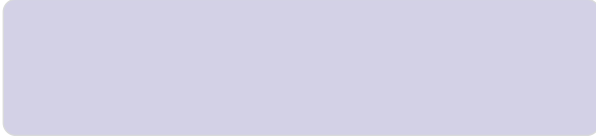
TWILIGHT 1076 HG

NEW



TWILIGHT 1076

NEW



LUXE LAVENDER 1077 HG

NEW



LUXE LAVENDER 1077

NEW



FERN GREEN 1078 HG

NEW



FERN GREEN 1068

NEW



SEA JADE 1079 HG

NEW



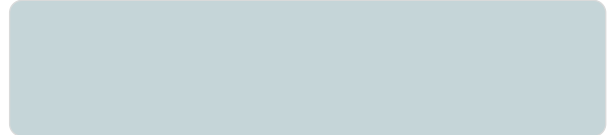
SEA JADE 1079

NEW



BLUE HAZE 1080 HG

NEW



BLUE HAZE 1080

NEW



STEEL BLUE 1081 HG

NEW



STEEL BLUE 1081

NEW



ASH ROSE 1082 HG

NEW



ASH ROSE 1082

NEW



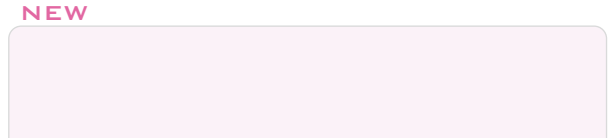
MAGENTA 1083 HG

NEW



MAGENTA 1083

NEW

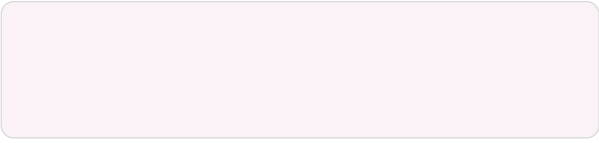


MISTY LILAC 1084 HG

COLOUR CHART

SOLID SHADES

NEW



MISTY LILAC

1084

FOR
MATCHING
EDGE BANDS



COLOUR CHART

SPARKLES & METALLIC



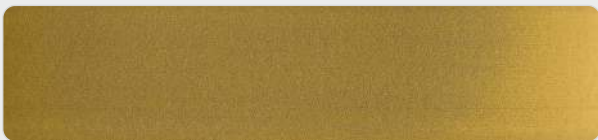
3001



3002



3004



3005



3006



3101



3102



3105



3106



3109



3110



3112



3125



3201

FOR
MATCHING
EDGE BANDS





FOR
**MATCHING
EDGE BANDS**

A square QR code located to the right of the text 'FOR MATCHING EDGE BANDS', which likely links to the company's website or product information.

Customer Care for Edge Bands

 **+91 70251 70251**

info@e3panels.com | www.e3edgeband.com

